

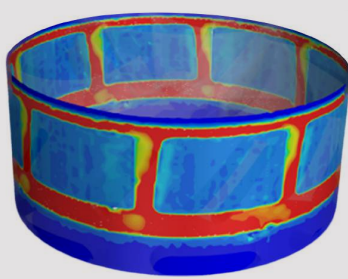
# MixSing Injector

## Key benefits

- Educator based vacuum suction
- Stable powder introduction
- Improved ergonomic (table model)
- Noise <78 dB(a)
- High outlet pressure
- Hygienic design
- Ease of maintenance
- CAPEX & OPEX optimised
- EHEDG, EC 1935 and CE marked



Shear performance 2600 rpm



## Operations

Creating the perfect suspension without particle separation or the quintessential emulsion, the MixSing caters for your needs.

The impeller vortex effect forces the ingredients through the impeller / stator construction where the product will be exposed to high shear forces up to 200,000 s<sup>-1</sup> reducing the size of the particles.

The high shear unit is designed for operation between 300 - 3600 rpm.

## Design basis

Computational Fluid Dynamics form the basis of the design development and optimisation.

Experienced resources created a virtual model and arranged a simulation of flow & shear patterns, vacuum effect on flow, cavitation risk, visualisation of flow, shear, CIP-ability, baffle design, wear and strength analyses. A physical unit was tested for operational performance to confirm the advanced and optimised design.



# MixSing Injector

## Application integration

Batch, in-line or continuous mixing – no limitation. Designing the right process for your product recipe and adapting it as your process needs changes, the MixSing facilitates your requirements.



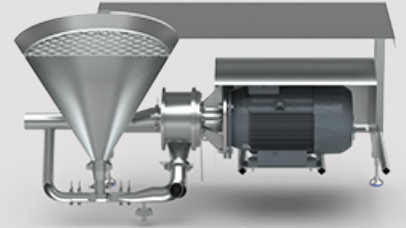
### Dairy

- Recombined milk products
- Flavoured milk
- Ice cream



### Beverage

- Sugar dissolvers
- Syrup preparation
- Stabiliser blends



Contact us for other applications

## Design

- Mixer system
  - Standard motor
  - Frequency inverter
  - Shaft seal and drive
  - Impeller & stator system
- Product in-/outlet
- Injector
- Pump protection shield
- Table with frame (optional)
- Adjustable feet
- Powder hopper
- Mesh
- Service valves for water flush
- Other requirements

## Technical data

	Unit	Injector	Injector Table
Power installed	kW	7.5	7.5
CIP	m <sup>3</sup> /h @ 2 bar(g)	12 - 18	12 - 18
Service water	l/h	60	60
Built-in tank volume	l	60	60
Dimensions HxWxD	m	1.0x 1.2x 1.6	1.0x 1.2x 1.7
Shipping weight	kg	200	250
Shipping volume	m <sup>3</sup>	3	3

\*Typical capacity <75 kg/min of skimmed milk powder

\*Customisation/products can alter values